



**PRECISION**  
**PERISTALTIC PUMPS**  
by BINACA PUMPS

## OEM PUMPS PP-303 SERIES

### FEATURES

These OEM peristaltic pumps have a compact structure and are capable of delivering up to 1330 mL/min. High grade Stepper Motors are made for long life. Our proprietary DC controller is designed to provide precise flow control.

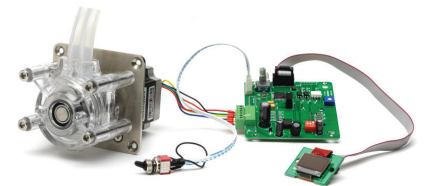
- ✓ Flow Rate up to 1330 mL/min
- ✓ Designed for OEM applications
- ✓ High grade Stepper Motor provides long life & precise flow control
- ✓ Pumps are available with a built-in Controller/Driver for Stepper Motor



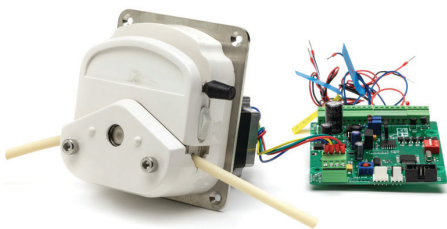
PP-303-SM-PSF



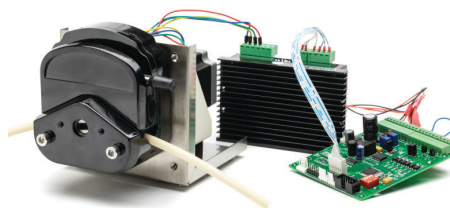
PP-303-DC-PSF



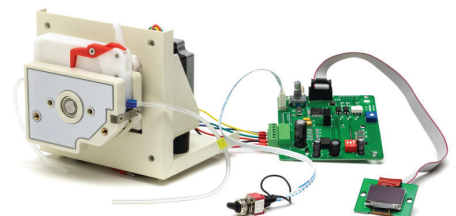
PP-303-SM-SPH-DCDR  
(With Controller)



PP-303-SM-PSF-DCDR  
(With Controller)



PP-303-SM-PPS-DCDR-DR  
(With Controller & Driver)



PP-303-SM-MF-DCDR  
(With Controller)

# PP-303 Series

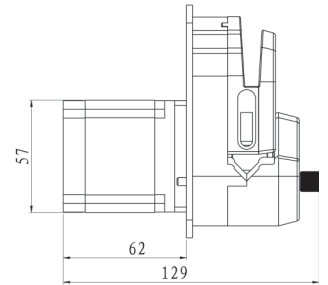
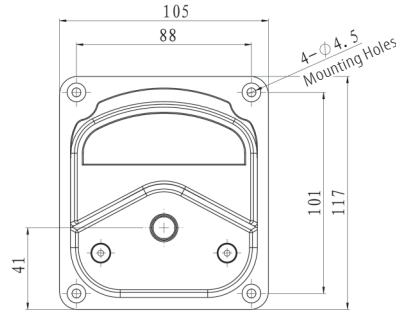
## Precision Peristaltic Pump

PP-303 Series Pump Details	
Speed Range	≤ 350rpm
Max. Flow Rate	1330mL/min
Motor Type	57 Stepper Motor / 42 Stepper Motor
Motor Phase Number	2
Motor Step Angle	1.8°
Motor Phase Voltage	3.75V
Motor Phase Current	3.0A

Model PP-303: Speed/Flow Rate Reference						
Pump Head	Tubing	ID x Wall Thickness (mm)	mL/r	Flow Rate (mL/min) (0.1-600rpm)	Tubing Max Pressure (Mpa)	
					Intermittent	Continuous
PSF	#13	0.8x1.6	0.07	0.007~42	0.27	0.17
	#14	1.6x1.6	0.27	0.027~162		
	#19	2.4x1.6	0.55	0.055~330		
	#16	3.1x1.6	0.82	0.082~492	0.24	0.14
	#25	4.8x1.6	1.7	0.17~1020	0.14	0.10
	#17	6.4x1.6	2.9	0.29~1740	0.10	0.07
	#18	7.9x1.6	3.8	0.38~2280		
PPS	#15	4.8x2.4	1.7	0.17~1020	0.27	0.17
	#24	6.4x2.4	2.9	0.29~1740		
SPH	#24	6.4x2.4	2.5	0.25-1500	0.27	0.17

## PP-303-SM-PSF

### *Precision Peristaltic Pump*



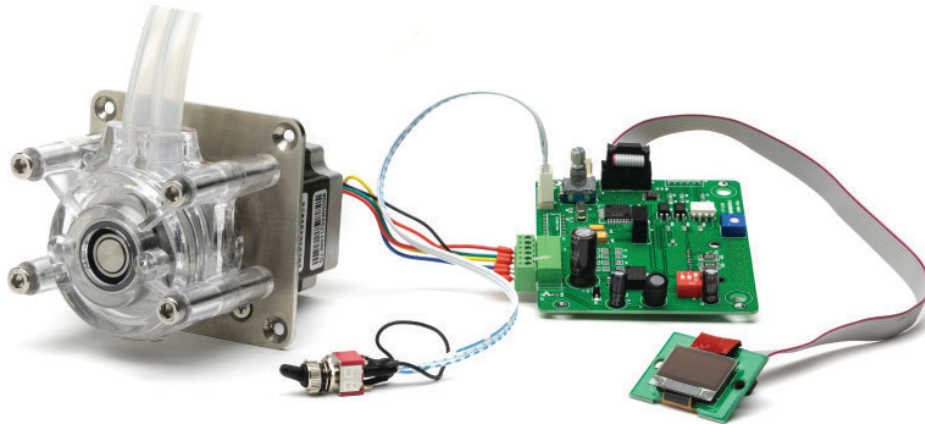
## PP-303-DC-PSF

### *Precision Peristaltic Pump*



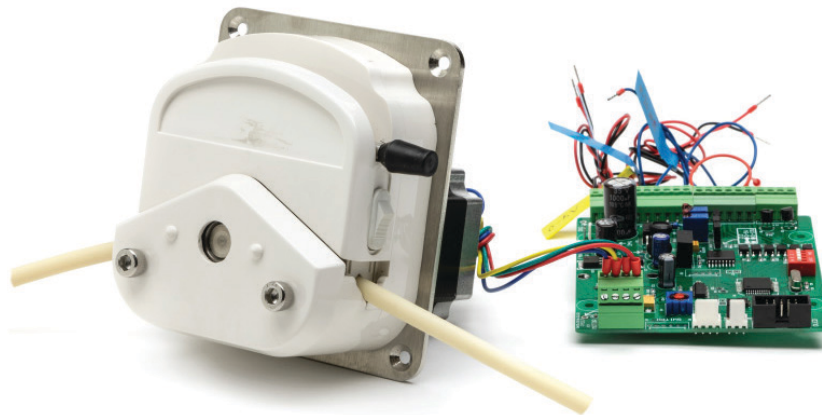
PP-303-SM-SPH-DCDR (With Controller)

*Precision Peristaltic Pump*



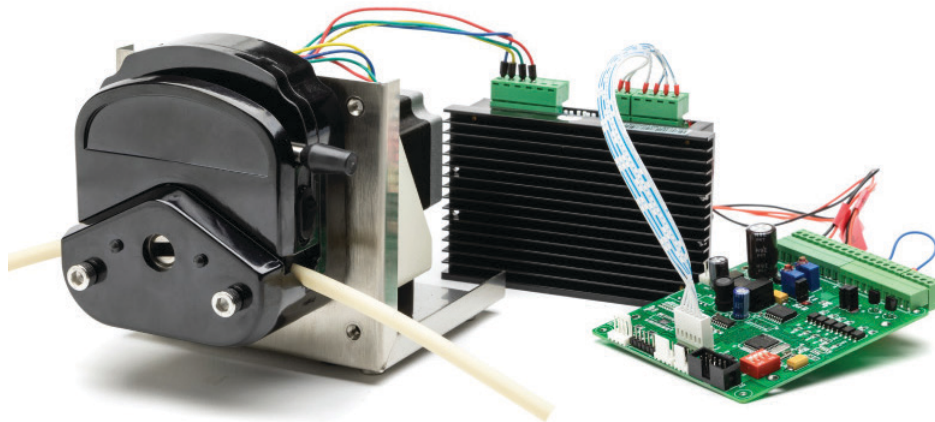
PP-303-SM-PSF-DCDR (With Controller)

*Precision Peristaltic Pump*



PP-303-SM-PPS-DCDR-DR (With Controller & Driver)

*Precision Peristaltic Pump*



PP-303-SM-MF-DCDR (With Controller)

*Precision Peristaltic Pump*

