

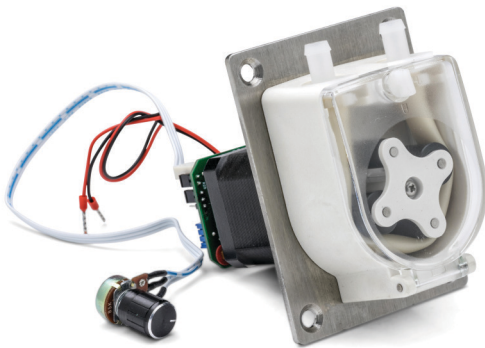


OEM PUMPS

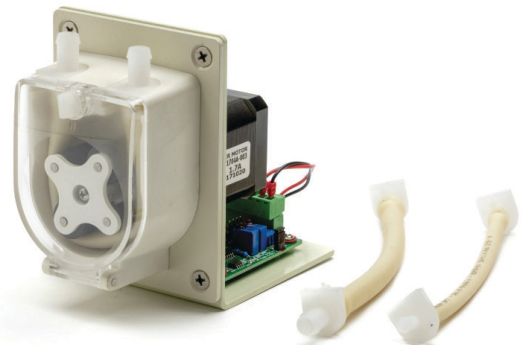
PP-202 SERIES

FEATURES

- ✓ Miniature Peristaltic Pumps for OEM applications
- ✓ Compact design
- ✓ Flow rate up to 800mL/min
- ✓ Complete range of Drives: Stepper motor, DC motor, Brushless DC motor & AC motor
- ✓ See through protective shield made of strong Polyethersulfone (PES)
- ✓ Available in different colors to differentiate between different types of fluids



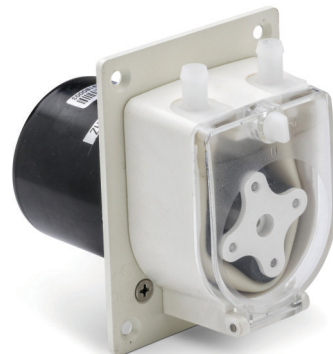
PP-202-SM



PP-202-SM-DCDR (With Controller)



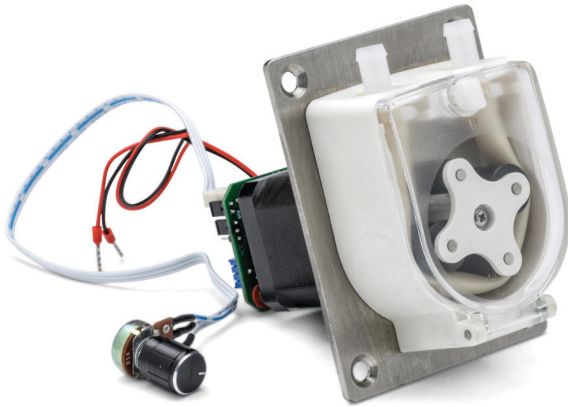
PP-202-DC



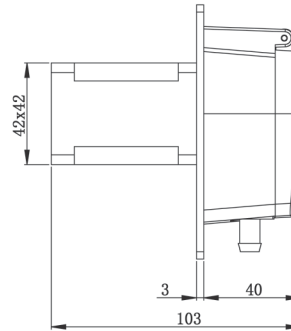
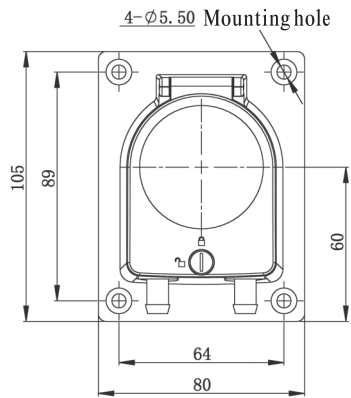
PP-202-AC

PP-202-SM

Precision Peristaltic Pump

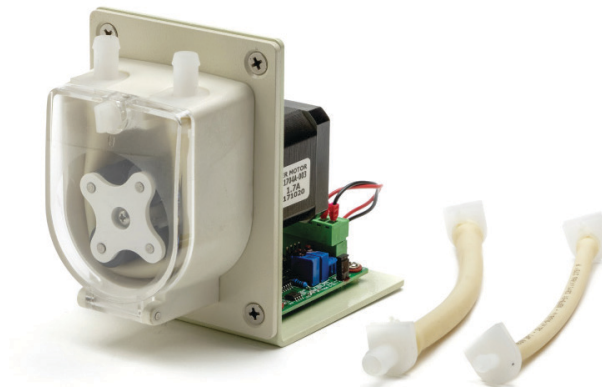


PP202-SM Pump Details	
Speed Range	≤ 300rpm
Max. Flow Rate	800mL/min
Motor Type	42 Stepper Motor
Motor Phase Number	2
Motor Step Angle	1.8°
Motor Phase Voltage	3.0V
Motor Phase Current	3.0A



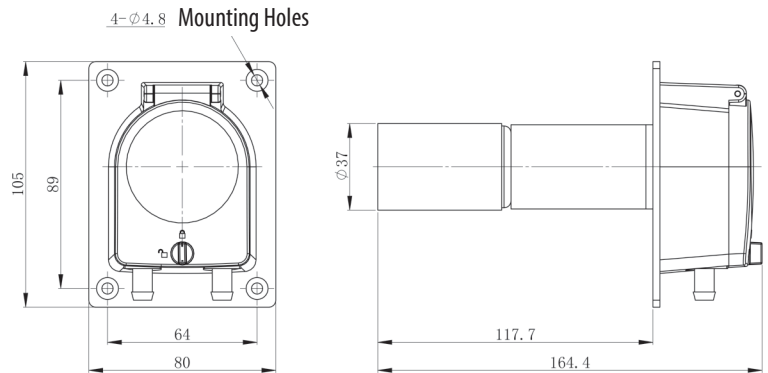
PP-202-SM-DCDR (With Controller)

Precision Peristaltic Pump



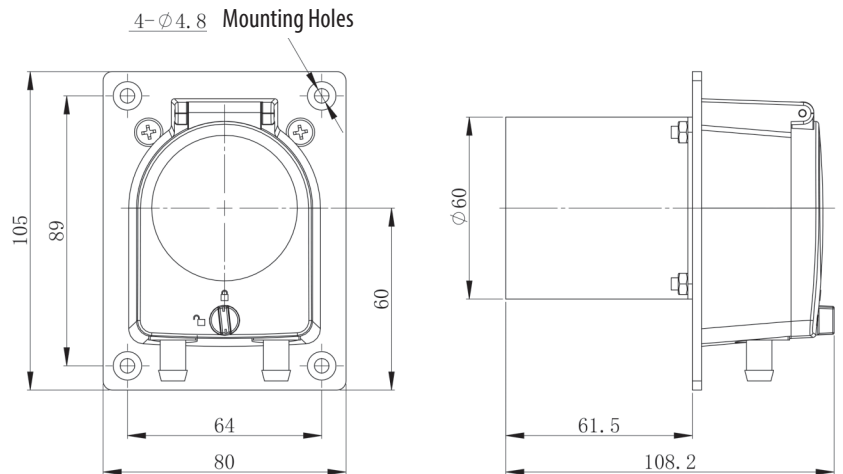
PP-202-DC

Precision Peristaltic Pump



PP-202-AC

Precision Peristaltic Pump



PP-202 Series

Precision Peristaltic Pump

Technical Specifications							
Model No.	Housing Material		Tubing		Speed Range (rpm)	Flow Rate (mL/min)	Weight (kg)
	Body	Protective Cover	Tubing Sizes	ID x Wall Thickness (mm)			
PP-202	PES	Transparent PC	#16	3.1 x 1.6	0.1-350	0.08~280	0.12
			#25	4.8 x 1.6		0.16~580	
			#17	6.4 x 1.6		0.30~800	

Tubing Installation Procedure

Turn the holding pin into unlocking position



Open the transparent cover



Install the tubing



Close the transparent cover, and turn the holding pin to locked position

